



A FAMILY IN CHRIST CARING FOR ALL PEOPLE

February 2011

VOLUME #118 ISSUE #2

Epiphany 2011: Light Therapy

We discussed it again today in the Wednesday Women's Study Group — how difficult this time of year is for many people with all the gray and gloom and depression. We all need Light Therapy! The light of the Son! This year's Epiphany season is as long as it can be due to the late date of Easter. Thank goodness; we need as much light as we can get! As the days grow longer and the sun shines brighter, we gain glimpses of our Savior. We hear him teach us how to follow him in the Sermon on the Mount. We pull out every hymn and song we can think of that talks about Light. We give out "glow in the dark" stars to remind us that the light shines in the darkness, and the darkness has not, will not overcome it. We pray with flashlights, candles, lighthouses, and nightlights. We hear testimonies of those who have shared the light of Christ with us.

My "light therapy" this week came from one of our homebound members. As we were visiting, she told me how much she appreciated getting a copy of the bulletin in the mail each week. She said that she used it every night. "Every night?" I asked. "Yes," she responded. "Every night I read through all the names in my prayers. I may not know the person, but God does, and God loves them and knows what they need."

Isn't that amazing? Doesn't it shine the light of Christ into a gloomy day? Knowing that there are saints of prayer out there who may be praying for YOU!

"Lord, Jesus Christ, fill me, I pray, with your light and life." writes St. Ignatius. May that prayer sustain you during these Epiphany days!

Pastor Kendra

Sunset Hills Sings: An evening of contemporary Christian Music & fellowship on Sunday, January 30, 2011 at Lindbergh High School Auditorium. The event will feature Christian bands and praise teams from First Baptist, St. Lucas UCC, and St. Thomas/Holy Spirit. A reception and silent auction begins at 6pm. Music will begin at 7pm. Tickets are \$15 Adult and \$5 Youth. Proceeds go to the Sunset Hills Tornado Assistance Fund 2011. Questions? Call Perry Nelson at 314-283-4050.

Life at Gethsemane



Thanks to everyone who participated, helped and shopped at Gethsemane's first craft fair. In spite of the weather, there was a nice turn-out. Proceeds benefited the "Building a House Where All Are Welcome" Capital Fund Campaign for the Renovation. Thanks to Kathy Lee for organizing and cheerleading! On a different subject, it was amazing to see all the adopt-a-family gifts that came in. What Christmas spirit!



February Events

Join Us for the Annual Valentine's Spaghetti Dinner!

This year's spaghetti dinner will be Sunday, February 13 from 4:00 to 7:00 p.m. Dinner includes Rich Schuessler's delicious spaghetti (meat or veggie sauce), salad, freshly baked bread, a variety of desserts, coffee, tea and pink lemonade. The price is \$8 for adults and \$5 for children 12 and under (3 and under are free). Carry-outs are available, but if you dine in you'll also be able to enjoy the wonderful musical talents of many of our members. It's a wonderful evening of good food, good friends, great entertainment - and all for a good cause. Proceeds from the event are used for the Susan B. Komen Breast Cancer Walk for the Cure.

Want to get even more out of this event? Get involved! We need lots of volunteers to make this evening happen. We'll need servers, cooks, musicians and a clean-up crew. This is a great way for new members to get involved! If you can help, please call Lory Bowman at 406-1399.

Make plans now to join us for this fun, fulfilling event!

Sundays in February

Sunday, February 6 "Let Your Light Shine" *A Salt and Light Prayer Station will be available for you to use as a time of prayer. Deaconess Phyllis Saathoff will be installed as our Parish Visitor.*

Between Services: PMC Steering Team Meeting; Social Action Committee Planning Meeting

Sunday, February 13 "The Light of Reconciliation" *An opportunity for the Laying on of Hands and Prayers for Healing will be offered during worship.*

Between Services: "The ABC's of RIC" Discussion; Confirmand/Mentor Orientation

Sunday, February 20 "The Light of Love" with guest preacher Dr. Marilyn McGuire.

Sunday, February 27 "Trusting the Light" *Sunday School children will sing at the 11am service.*

Between services: Bible Study—Sermon on the Mount, Pt. 2 "Turn the Other Cheek? Don't Worry? Let's Get Real!" led by Pastor Kendra in the library.

**RACHEL CIRCLE WILL NOT
BE HAVING A FEBRUARY LUNCHEON**
Watch this space for information regarding
upcoming meetings.

Health Cabinet

“A time to mourn...a time to heal”

St. Gabriel's Grief Ministry
A Four Week Series on Wednesdays
Beginning February 2, 2011, 7:30-9:00 p.m.
Gabriel House, 4700 Tamm Ave.

Open to anyone in the Community who has experienced the death of a loved one in the past several years. To register and for more information, please call Mary Kochelek, Parish Nurse at 353-6303 ext. 125. We recommend that you plan to attend all 4 sessions.

Stewardship 2011 Checklist

- ◆ Pick up 2011 offering envelopes — recycle unused 2010 envelopes.
- ◆ Begin 2011 giving to Gethsemane Lutheran Church if you have not done so already.
- ◆ Examine your 2010 Financial Statement which was mailed at the same time as this Messenger. Read the cover letter from Stewardship Chair Keith Paulson. Thank you for your generous, sacrificial giving! If you were not current on your statement of intent (pledge) in 2010, prayerfully consider a special gift to start off 2011. If you have any questions about your statement, please call the church office.
- ◆ Use your Schnuck's e-script card when grocery shopping. This is free money for Gethsemane. Talk to Randy Moe, Peggy Zapf, or the church office if you would like to get a card.
- ◆ Help children become “cheerful givers” by having them set aside an offering each week and using their own offering envelope each Sunday.
- ◆ Set up an “automatic-giving” plan to Gethsemane via your bank (by check), or through Simply Giving (electronic giving). Either way, it is an easy way to support the church. No more playing “catch-up” due to illness or vacation.
- ◆ If you are a city resident, blue “single stream” recycling dumpsters should have been brought to your alley. Reduce — Reuse — Recycle!
- ◆ Watch for opportunities to “Be the Difference” at and through Gethsemane!

LivingLutheran.com is now live and open to the public!

The ELCA has launched a new website, LivingLutheran.com. It is a place where ELCA members across the nation can come for fresh, daily stories of inspiration and conversation about what it means to “live Lutheran.” There is a lot of diversity of opinion. Something for everyone. A way to feel connected and encouraged, but also challenged. Check it out!

Life at Gethsemane

Church Council Highlights

January, 2011

1. Welcomed those newly elected to Council: Betsy Bartholomew, Richard Brendel, Mark Cutelli, and Keith Paulson. Began with devotions and Dwelling in the Word.
2. Pastor Kendra led an orientation on the Council's role and function.
3. Finance Chair Dan Flaxbart presented 2010 year-end information and a summary of projected income from pledges and other sources. Discussion followed on the proposed 2011 Budget (Spending Plan). The decision was made to present a deficit budget (of about \$5000) as a challenge to the congregation at the Congregational Meeting on January 16th. The 2011 Spending Plan would be \$240,700. Thanks were extended to Rick Schuessler and Dan Flaxbart for their work in preparing the financial reports and budget.
4. The major remaining item from the Renovation work is to redo the concrete stairs and area of refuge outside the SE sanctuary door. The first work was unacceptable, however replacing them will need to wait for the appropriate weather.
5. Rich Brown reported on Staff Reviews. Suggestions were made for various items that could be done to support staff person's work, but all are affirming of their ministry at Gethsemane. The Mutual Ministry Committee still needs to conduct the annual review with Pastor Kendra.
6. The following were chosen as the 2011 Executive Committee: Charlie Wallis, President; Debbie Schaller, Vice-President; Denise Buehrer, Secretary; Richard Schuessler, Member-at-large. Rich Schuessler was re-confirmed as Treasurer. Council members were appointed as liaisons to the following committees: Charlie Wallis (Mutual Ministry and PMC); Betsy Bartholomew (Welcoming); Mark Cutelli (Worship); Debbie Schaller (Education); Rich Brown (Fellowship); Richard Schuessler (Finance); Luke Borkowski (Youth); Darlene McElwee (Health Cabinet); Denise Buehrer (Gift & Memorial); Jim Mantia (Property); Richard Brendel and Peggy Zapf (Social Action); Keith Paulson (Stewardship).
7. A bid for audio/video security and electronic door opening (Parking lot door) for \$3700 was approved, to be paid for out of the Building Renovation Fund.
8. The paper recycling bin in the alley will be removed because a) the location poses a hazard to damage to the building; b) it will free up a parking spot; and c) single stream recycling containers are now located in St. Louis city alleys. Pastor Kendra expressed a concern that we continue to recycle paper and other products as a way of living out our care for the earth in stewardship.
9. The Council approved a recommendation from the Health Cabinet to formalize the relationship with Phyllis Saathoff as our Deaconess Parish Visitor. Phyllis assists the pastor by making 8-10+ visits per month to homebound members to bring the sacrament of Holy Communion and prayer, organizes the lay Eucharistic ministers, reports to the Health Cabinet, and is supervised by Pastor Kendra. The stipend for this position is included in the 2011 budget.
10. "Be the Difference" (Time and Talent) sheets have been collated and were distributed to Council members.

Reconciling In Christ

Reconciling in Christ is a program for Lutheran communities of faith to answer the inclusive call of the gospel by welcoming believers of all sexual orientations and gender identities. Gethsemane is in a process of prayer, dialogue and education to make a decision to adopt this designation through a welcoming statement.

February RIC Events

Sunday, February 13, 2011, 9:45 am – 10:45 am, in the chapel

The ABCs of RIC

What do all these letters mean?

How do we define the terms: gay, lesbian, bisexual, transgender, queer, questioning and intersex?

This will be a frank and open discussion led by Lindsay Schuessler.

Sunday, February 27, 2011, 12:15 pm – (no later than 3:00)

Lunch and working meeting to draft a welcoming statement for Gethsemane.

Everyone interested in helping to write the first draft is encouraged to attend!

Childcare will be available.

Personal statement from a daughter of Gethsemane

Kirsten Ruckdeschel Vicknair is the daughter of Roy and Mary Ruckdeschel. She was confirmed and married at Gethsemane. She and her husband Brent live in the Rogers Park area of Chicago with their daughters 2-1/2 year old Anna and 8-month old Ella.

“After I graduated from college I decided to find a church in the Chicago area in which I could become a member. Although I visited multiple churches I found that Holy Trinity was the perfect fit for me. One of the biggest reasons was because it is a Reconciling in Christ church. I have friends that are gay and it was important to me to be part of a church that understands the needs of the LGBT community. I wanted to become a member in a place that supports people openly and without judgment.

Some congregations believe that as Christians it is understood that all people are invited to come and worship, that everyone is welcome in their faith community. That assumption can mask the need to really examine our beliefs. We live in a society of extremes and for every church member that embraces diversity there is another that hurls hateful words at people who are believed to be different. In such a climate it can be difficult for members of the LGBT community to know where they are welcome.

By labeling itself as Reconciling in Christ, Holy Trinity church has made itself known as a community that welcomes all of God’s children. All people can feel safe to worship there. I love the diversity that resides within Holy Trinity. And I love that my children are exposed to that diversity every week. They are able to see that people come in all different shapes and sizes and that God loves each and every one of us.

The congregation has grown exponentially since I became a member which I believe reflects a change in attitudes about the LGBT community. We are a congregation of young and old, gay and straight, men and women, black and white, families and single adults. And I wouldn’t have it any other way! As a former Gethsemane member, I hope you will join Holy Trinity in becoming an RIC community.”

(This statement was read as part of Gethsemane’s RIC presentation of personal stories in October of 2010.)

Confirmation and Youth

Confirmation Classes will be held on Wednesday, February 2nd and 16th from 6:30-8:00pm at St. Mark's Lutheran Church.

Meeting for Confirmands and Mentors: Confirmation students and their mentors are asked to meet with Pastor Kendra on Sunday, February 13th, at 10:00am, in the Library for orientation.

SOUPER BOWL OF CARING

The GYG is again working in cooperation with a nation of youth to support the SOUPER BOWL OF CARING event. This canned food drive is held on February 6th, NFL Super Bowl Sunday. We ask you to bring non-perishable food items to church and vote for who you think will win the big game by placing your items in the specified team's box — the Green Bay Packers or the Pittsburgh Steelers. Regardless of the score, we will all be winners as the food will go to support local food efforts at Joint Neighborhood Ministry. A special noisy offering will also be collected with money going to the ELCA World Hunger Appeal. Let's help out and have some fun this SOUPER Bowl Sunday!

More Than Money Matters: Setting Goals

This award-winning workshop will help you:

- ◆ Understand how goals drive your budget.
- ◆ Calculate the cost of your goals.
- ◆ Set SMART goals.
- ◆ Identify and use strategies to manage pressure to spend.

Find out how goals can help you manage your money, live your values and steward your resources. You'll walk away with practical tools and an understanding of what to do next.

Cost: FREE!

Offered by: The Southside Cluster of the ELCA Metro Coalition

When: Saturday, February 12, 2011; 10-11:30 am

Where: St. Thomas/Holy Spirit Lutheran Church, Sunset Hills

Register: Call or email the church office, 314-843-6577; or sths@swbell.net by

Wednesday, February 2

OR talk with Keith Paulson at Gethsemane.

IN OUR COMMUNITY...

Letters from the Land of Cancer. On Sunday, March 13 at 7:00pm Walter Wangerin, Jr. will present an eloquent reflection on the end of life based on letters he shared with his friends and family during the time when he was diagnosed and treated for lung cancer. Wangerin is currently serving Valparaiso University as Senior Research Advisor within the colleges of Arts and Sciences. His presentation, part of the ongoing Schaaf Memorial Lecture series, will be given at St. Mark Luthern Church, located at the corner of North High and East "D" Streets in Belleville. There is no charge for admission. Child care will be available at no charge. For more information, please phone (618)233-7914.

A Gift You Won't Return! When was the last time you gave your marriage a gift? Why not give your spouse and yourself a great gift by committing to attend the next **Lutheran Marriage Encounter Weekend**? On the weekend, you and your spouse will be gently guided through a communication process that will deepen your relationship and communication with each other. The next L.M.E. weekend is scheduled for **March 4-6**. It will be held at the Holiday Inn, South Lindbergh Blvd. For more information, please contact Tom & Kathy Von Behren at 636-343-9453 or vonbeh@attglobal.net. Too shy to call for more information? Then check out the website at www.stlmarriage.com before you register!

THE ST. OLAF CHOIR

The St. Olaf Choir from St. Olaf College in Northfield, Minnesota, will be appearing in concert at Manchester United Methodist Church, 129 Woods Mill Rd., on Friday, February 11, at 7:00 p.m. during their upcoming annual national tour. Tickets are now available at stolaf tickets.com.

CAMP WARTBURG WINTER RETREATS

Waterloo, Illinois

A Women's Weekend, "Faith for Our Freakouts," February 18-19, 2011, \$50 per person. Women live in a world threatened by fear. Fear assaults our lives with pressure, stress and anxiety. This weekend we will identify our own individual fears, develop a game plan to seek God's power, and move forward toward replacing numbing fear with a strong faith.

Men's Retreat, "Like Jonah...you are a man on a journey," February 25-26, 2011, \$40 per person. Dr. Reed Lessing is your retreat presenter. Study God's Word. Fellowship. "Manly" activities — if you dare, free activities will make you feel like an adventurous kid again.

For more information, contact Camp Wartburg at 618-939-7715 or email us at wartburg@htc.net. Registration forms are also available at church.

AND IN OUR WORLD

Lutheran World Relief Sustainable Development. Lasting Promise.

Lutheran World Relief now has a new "tagline." While still the same LWR, the new tagline better tells the story. Since its founding in 1945, LWR has worked to end poverty, injustice and human suffering in a sustainable way that brings the lasting promise of a better future. This new tagline emphasizes the hand-up, not hand out, which we offer to so many communities. At the same time, it also brings to mind the promise of Christ's love and mercy that underlies the mission and blesses the work. After all, it is not our hands but Christ's who feed the hungry, shelter the homeless and empower the downtrodden.

In the aftermath of the earthquake in Haiti, LWR raised more than \$7 million for a long-term response. In addition to quilts, health kits, layettes, school kits, tents and tarps, LWR working with local partners provided health and hygiene training, built latrines, provided seeds and tools, assisted with cash for work programs that repaired roads, improved arms and built latrines, and stocked community stores in 12 rural communities.

Social Action

BREAD FOR THE WORLD SCORES TWO!

On Sunday, November 14 we at GLC sampled delicious breads and jellies and wrote letters to our elected officials in support of the poor and hungry. On December 3 we received the following note acknowledging the effectiveness of our effort:

I want to let you know that Bread for the World scored two major victories this afternoon. Congress passed the Healthy, Hunger-Free Kids Act (also known as the Child Nutrition Reauthorization), and immediately afterward passed the Middle Class Tax Relief Act of 2010. These are two big, big victories for millions of working poor families and for America's children, especially the one in four kids who live in households that struggle to put food on the table.

The Healthy, Hunger Free Kids Act now goes to the president for his signature. It will ensure that millions of schoolchildren get healthier lunches and breakfasts, and that more kids will find it easier to get these meals.

The Middle Class Tax Relief Act makes permanent the Earned Income Tax Credit and the Child Tax Credit—the goal of Bread for the World's 2010 Offering of Letters. This bill now goes to the Senate for its consideration.

These bills are early Christmas gifts. Thank you for all your support. And thanks be to God!

Grace and peace,

David Beckmann

President, Bread for the World

Subsequently it was announced that the Healthy, Hunger Free Kids Act was signed into law by President Obama on 12/13/2010 and the Middle Class Tax Relief Act was signed into law on 12/17/2010. Many, many thanks to all those who participated in the letter writing campaign in support of people who need and deserve our support, your effort did not go unnoticed.

VICISSITUDES

(The changes or events that occur in our lives)

*Dear Peggy and members of Gethsemane,
Thank you so much for your wonderful support.
Last year we placed 341 women and children into
new homes. We will work hard to be good stewards
of the funds you have entrusted to us!
Sincerely,
Martin Rafanan
Gateway 180*

*Gethsemane Lutheran Church,
Thank you to all the members who so generously do-
nated hats and gloves to Froebel Literacy Academy.
We have many students whose families struggle to
meet their basic needs. These students are in need of
basic winter weather items to help keep them warm.
We receive requests for hats and gloves every day
this time of year. We are so pleased to be able to
pass on these items to our students. Thanks again for
your thoughtfulness and generosity.
Sincerely, Mimi Abegg, Froebel School Social*

Thanks to Nellie Hohnsen, for the gift of a 3rd
camel for our church crèche (manger scene). One
poor wise man had needed to walk the whole way,
so now he can ride along with his fellow magi!

*Gethsemane Family,
What a great week we had in southern California
culminating with the Tournament of Roses Parade.
Thank you for all of your support throughout our
long preparation time (15 months!) Your thoughts,
prayers, encouragement and excitement just added
to the lifetime of memories that were created. If
you're interested, just ask us about the experience.
We're always happy to brag on the wonderful Spirit
of St. Louis Marching Band.
Peace,
Luke and Gary Borkowski*

February Birthdays

- 1 Damien Gustafson
- 5 Michael Borough
- 6 Nathan Keightley
- 10 John Salerno
- 13 Dawn Riske, Cynthia Tanner
- 14 K.T. Elliott, Helen Lett
- 16 Haley Dieringer
- 17 Vi Aronsson, Cory Blackwell
- 18 Anna Bohnert
- 19 Marie Mueller, Fred Tatum
- 21 Pamela Lane
- 22 Darlene McElwee
- 23 Scott Hanson
- 24 Randy Moe, Roger Shaw
- 26 Tom Wobbe
- 27 John Wind

February Anniversaries

- 20 Pastor Kendra and Pastor Jeff 23 years

Post Your Gethsemane Pictures!

If you are on Facebook, post your Gethsemane pictures so we can access them! Please use your discretion and think of the safety of all involved! Check out our Gethsemane Facebook page!

Directory Change:
Sammy Mayer
Laclede Commons #131
727 Laclede Station Road
St. Louis, MO 63119
314-968-7566

THE GLC HEALTH CABINET
SPAGHETTI DINNER SPONSORSHIP
payment must accompany this form

- _____ I WILL DONATE A DESSERT!

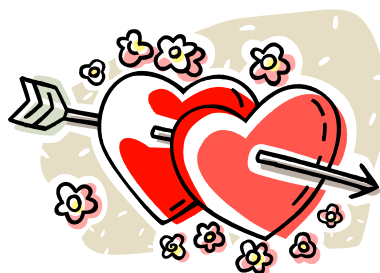
- _____ I want to sponsor five pounds of Spaghetti

- _____ I want to sponsor a gallon of Pasta Sauce

- _____ I want to sponsor a pound of Meatballs

- _____ I want to sponsor Five Loaves of Bread

- _____ I want to sponsor a Bottle of Olive Oil



ALL SPONSORSHIPS ARE \$5.00 EACH
ALL SPONSORS WILL BE RECOGNIZED AT THE DINNER

Amount enclosed \$ _____ (payable to GLC)

Envelope Number _____

How would you like your name listed on the sponsorship sign?

In Honor of: _____

In Memory of: _____

Your sponsorship helps to provide more proceeds for Gethsemane's Team at the Breast Cancer Walk in June!

This form must be given to the church office no later than Monday, February 7, 2011.

Gethsemane Lutheran Church
3600 Hampton Ave., St. Louis, MO 63109
Phone: 314-352-8050; Fax: 314-352-8051
Email Address: Gethsemane@swbell.net
Webpage: www.gethsemanestl.org
Church Office Hours: 8:30am-1:30pm

Pastor Kendra Nolde
314-524-6817 prkendra-glc@swbell.net

MESSANGER NEWS

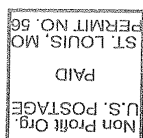
You can send your news and notes for the Messenger to glc-messenger@swbell.net. There is also a Messenger drawer by the church office. For best results, news should be in by the 20th of each month, but we'll do our best to get your news in whenever you submit it.

eMESSENGER

Please consider helping us save a tree and save on the cost of paper and postage. This happens if you choose to receive your Messenger only by e-mail. Just send us a message at glc-messenger@swbell.net.

WEEKLY E-NEWS

If you are not receiving our weekly e-news and would like to receive it, let us know by sending an email to gethsemane@swbell.net (and make sure that you put our address in your address book so that your spam filters let it pass through!).



“Return Service Requested”

Gethsemane Lutheran Church
3600 Hampton Avenue
St. Louis, MO 63109