

# MESSENGER

## GETHSEMANE LUTHERAN CHURCH

A FAMILY IN CHRIST CARING FOR ALL PEOPLE

FEBRUARY 2008

VOLUME #1 15: ISSUE #2

### “Rebuild Your Faith While They Rebuild HWY 40”

What a great sign idea for this Lent!

First, the season of Lent is 40 days (not counting Sundays, which are always “little Easters”). Pope Gregory said that the church keeps Lent for forty days because we multiply the ten commandments by the four gospels. In the Bible, whenever God want to prepare someone for his purposes, God took 40 days. So, on Wednesday evenings this Lent, we will look at “40” stories from the Bible: Jesus Tempted in the Wilderness, Noah & the Flood, David & Goliath, Jonah & the Fish, Elijah & the Bread. What do these stories have to do with “40”? How can these stories prepare us for God’s purposes? BYOB (Bring Your Own Bible) on Wednesday evenings and find out!

Second, rebuilding Highway 64/40 is no little project; it is an “Extreme Makeover.” You might call Lent an “Extreme Makeover: Faith Edition.” On Sunday mornings, our scripture readings describe both our need and God’s response that makes possible the extreme makeover of our lives. In The Large Catechism, Martin Luther talks about the makeover of our lives in Holy Baptism as repentance: “What is repentance but an earnest attack on the old (person) and an entering into a new life. If you live in repentance, therefore, you are walking in Baptism, which not only announces this new life but also produces, begins and promotes it. In Baptism we are given the grace, Spirit and power to suppress the old (person) so that the new may come forth and grow strong.” We might not be chosen to have our home redone as an “Extreme Makeover” on television – but we are each chosen and invited to enter into this Lenten season for the makeover which truly gives life, health, and salvation through our Lord Jesus Christ.

*See you in worship (on Wednesdays and Sundays!)  
Pastor Kendra*

**“SOUPER BOWL” SUNDAY:** GLC will take part in this national event on **February 3rd**. We encourage you to bring a canned soup, which will go to Joint Neighborhood Ministry. The GYG will also take a cash offering that day which will support the breakfast program of Immanuel Lutheran Church in North St. Louis City which feeds 150+ hungry people each Sunday all year. In 2007, over \$8 million was raised nationally, over \$800,000 by ELCA Lutherans. Thanks for all of your help!

### SAVE THE DATE

#### Training for All Ushers and Greeters

Sun., Feb. 3 – 10:00am  
In the Sanctuary

#### Sunday School Staff Meeting

Sunday, Feb. 3 - Noon

#### Tai Chi Classes

Sundays, Feb. 3, 10, 17  
6:30 and 7:30

#### ASH WEDNESDAY, Feb. 6

9:00am White Breakfast  
10:00am Worship Service  
7:00pm Worship Service

#### Valentine’s Day Spaghetti Dinner

Saturday, Feb. 9 from 5-8pm

#### “Extreme Makeover: Family Edition”

Sundays, Feb. 10, 17, 24  
In the Chapel at 10:00am

#### IPM Immersion Trip Interest Meeting

in the Library  
Sunday, Feb. 10 at 10:00am

#### GYG Movie Day

Sunday, Feb. 10 at Noon

#### Midweek Lenten Soup Suppers and Worship Services

Wednesdays, Feb. 13, 20, 27  
6:00pm Supper  
7:00pm Evening Prayer

#### New Member Orientation

Sunday, Feb. 17, 3:30-7:00pm

#### First Communion Class

Sunday, Feb. 24, 1:30pm

# February at Gethsemane

## FEBRUARY SUNDAYS

**Sunday, February 3<sup>rd</sup> : The Transfiguration of Our Lord**  
The final Sunday before Lent begins. Read elsewhere in the Messenger about “Souper Bowl” activities.

**Sunday, February 10<sup>th</sup> :** On the first Sunday in Lent, we always hear the story of Jesus’ temptation in the wilderness. We need the Extreme Makeover that Lent offers because of our sin. A children’s message will include “Burying the Alleluia” for our Lenten season.

**Sunday, February 17<sup>th</sup> :** The well-loved passage of John 3:16 is a part of our gospel text for today. God offers an Extreme Makeover for sinful humanity because of God’s great love for the world.

**Sunday, February 24<sup>th</sup> :** The confirmation class will present the gospel story of “The Woman at the Well.” The living waters of baptism make possible our Extreme Makeover—that we who had been enemies to God are reconciled to God in the cross.

## Lifelong Learning Sunday Mornings

from 10:00-10:50 am

**Sunday, February 3<sup>rd</sup> :** Training session for all ushers and greeters in the Sanctuary! Whether you are already serving as an usher or greeter, have recently volunteered, or are just curious – please come for this orientation that is so important for our ministry of hospitality!

**Sundays, February 10, 17, and 24: Extreme Makeover: Family Edition.** Gerre Johnson, M.A., LPC will lead a three week session on parenting and kids.

- Week 1 will focus on “Styles of Parenting,” how to raise our children in the society in which we live so that they may be productive and healthy.
- Week 2 will focus on “Who are At-Risk Kids?” and look at what are the risks our kids face.
- Week 3 is To Be Determined, based on the suggestions of the group.

Gerre facilitates the family support group for parents and adolescent boys which meets at Gethsemane. His background includes 23 years experience and guidance in the fields of mental health and addictions. He is married, the father of three, and lives in St. Louis Hills.

## LENTEN MIDWEEK

## WEDNESDAYS

Traditionally, the 3 Lenten disciplines are prayer, fasting (giving up or taking on something for the good of the soul), and almsgiving (giving to the needs of others).

### Ash Wednesday, February 6<sup>th</sup>

9:00 a.m. **White Breakfast:** A time of simple food and fellowship at the beginning of Lent. Please sign up on the bulletin board at church or on your worship form.

10:00 a.m. **Worship** with the Imposition of Ashes and Holy Communion. We gather around tables that are in the shape of a cross in the Fellowship Hall for this more informal service.

7:00 p.m. **Ash Wednesday Worship** with Confession, the Imposition of Ashes and Holy Communion.

### Wednesday evenings beginning February 13<sup>th</sup>:

6:00 p.m. Soup Supper in the Walter Eckman Fellowship Hall  
7:00-7:45 p.m. Evening Prayer in the Sanctuary (Child Care for those under 5 available downstairs)

## NEW MEMBER ORIENTATION

A **New Member Orientation** will be held on Sunday, February 17, 2008 from 3:30-7:00pm (including a light supper). This orientation is for all who are considering joining Gethsemane and will offer an opportunity to learn more about Gethsemane and its ministries, to get to know other folks, to explore our spiritual gifts, and to share our faith.

# LIFE AT HOME ...

## Church Council Highlights

January 8, 2008

(Note: Official minutes are placed on the hall bulletin board after approved at the next Council Meeting)

1. Oriented Council members as to the role and function of the Church Council.
2. Elected Denise Buehrer as secretary and Lory Bowman as Executive Committee Member-at-large.
3. Re-confirmed Rich Schuessler as Treasurer.
4. Appointed Keith Paulson to serve one year in a vacated Council position.
5. Heard that the Sullivan camping property (Woodland Estates) has been transferred to a new owner.
6. Determined that the following council members would serve as committee liaisons:
  - a. Communication: Lory Bowman and John McElwee
  - b. Education (Sunday School): Carolyn Schainker
  - c. Youth: Peggy Lewis
  - d. Health Cabinet: Ted Yemm
  - e. Gift & Memorial: Denise Buehrer
  - f. Property: Norm Hopper
  - g. Social Ministry: Rich Brown
  - h. Staff Support: Carolyn Schainker
  - i. Stewardship: Bob Bollinger
  - j. Welcoming: Roger Shaw
  - k. Worship: Mike Elliott
7. Planned to call a meeting to establish a Fellowship Committee, or discuss ways to plan for various Fellowship events. Lory and John will gather folks together.
8. Received initial information about monies raised for 2007 Endowment Fund Matching Program.
9. Heard a report about the Christmas with Katrina trip to Biloxi.
10. Discussed possible ways that area congregations might be invited to participate and help with this year's Central States Synod Assembly, which will be in St. Louis from June 5-8, 2008.

## SCHNUCKS COMMUNITY CARD

Please pick up a Schnucks "eScrip" community card at the church, activate the card and present it every time you shop at Schnucks. Schnucks contributes a percentage of your purchase to Gethsemane every time you use the card. **THIS COSTS YOU NOTHING!!!!**

**FROM THE PROPERTY COMMITTEE:** We have installed new parking stops in the GLC parking lot. We would like everyone to pull **all the way up to the parking stop** to allow more space for cars driving through the aisle and to allow more space to back out of your parking spot. The parking stops are a different style so that cars, even lower profile cars, can pull all the way up to the parking stop without scraping the front of the car. Thank you to Mike Yemm (Ted's father) and his crew for donating their time, on a very cold Friday, and doing a great job of installing the new parking stops. We are blessed to know people who help our church.

*Property Committee*

## MINISTRY OF MOTHERS SHARING (MOMS) INFORMATION MEETING Thursday, February 28: 7:00-8:30 pm

MOMS is an 8-week class/group for mothers of ALL ages. It is designed:

- To gather mothers together to form a network of mutual spiritual support.
- To provide a group experience of learning, praying and ministering to each other.
- To introduce mothers to opportunities for personal and spiritual growth in a faith sharing group.
- To increase communication skills and the use of prayer rituals in the home.

It addresses such topics as Self-Esteem and Self-Acceptance, Stress, Worry and Anxiety, Everyday Spirituality, Feelings, Personal Goal Setting, and Values in Friendship, all in a context of Christian support and prayer.

If you have questions, please contact Leslie Wobbe (481-0708) or Pastor Kendra.

### *St. Louis Hills Ecumenical Midweek Worship: 10:00 am*

Thursday, February 21

At Gethsemane Lutheran Church

Deacon Burnell Esbenschade, St. Mark's Episcopal, Preaching

Thursday, February 28

At St. Gabriel Archangel Catholic Church

Rev. Robert Samson, St. Gabriel, Preaching

Thursday, March 6

At Trinity Assembly of God

Rev. Joel Oliver, Trinity, Preaching

Thursday, March 13

At Ascension Lutheran Church

Rev. Charles Spomer, Ascension, Preaching

# Children / Sunday School

## Sunday School Spotlight



Sunday school has gotten off to a great start in 2008, but I'd like to take a moment to look back at the end of 2007. The Sunday school children blessed us with a wonderful Christmas pageant on the fourth Sunday of Advent. They began with the traditional manger scene, complete with shepherds, angels and the stable animals.

We were then led through "the rest of the story", as told in the Gospel of

Matthew, by a Detective Angel. He showed us that Jesus' early life was not always peaceful and calm. Joseph and Mary had to put a lot of trust in God to keep them safe through many difficult times.

Thank you to all the children who participated, and a big thank you to Kim Elliott for organizing and directing the program.

If you are interested in being a part of our exciting Sunday School, please feel free to join the Sunday School staff for a meeting on Sunday, Feb. 3<sup>rd</sup> immediately following the second service.



This month's highlighted Sunday school teacher is **Debbie Schaller** who is a co-teacher for the kindergarten class.

Debbie first came to Gethsemane around 1989, shortly after she moved into the neighborhood. She said it seemed logical for her husband who is Catholic to attend St. Joan of Arc and for her to attend Gethsemane. She stayed at Gethsemane because of the friendly atmosphere, and because she feels very comfortable here. Debbie's family includes her husband Michael and daughters Kelly (18) and Samantha (11). They also have three cats, a dog and a parrot!

Debbie's hobbies include selling on EBAY, estate sales and flea markets, watching her 11 year old play sports, and watching crime solving shows. Debbie also states that she loves Sunday school and VBS; she has been a co-leader of VBS for the past several years.

Debbie describes herself as shy, but pretty talkative once she gets to know you. She can also be sarcastic, so she suggests you take anything she says with a grain of salt. Thank you Debbie for teaching in Sunday school and VBS!

**JOIN US!!!!** If you have a child between the age of 3 years (before Aug. 1 and potty-trained) and 12 years (through 6<sup>th</sup> grade), we would love to have him or her join us for Sunday School. Sunday School meets every Sunday at 9:50 a.m. for an hour of fun, stories, singing, exploring, and learning. If you have not completed a registration form for your child who attends Sunday school, please fill out a form or e-mail the following information to Christy Scheidt at

[meuserscheidt@yahoo.com](mailto:meuserscheidt@yahoo.com):

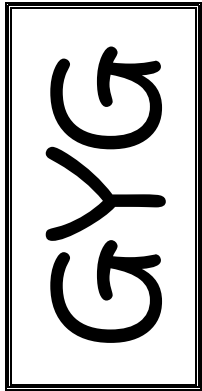
*Child's name, birth date and grade in school  
Address, phone number and e-mail*

*Parent's name(s)  
Medical concerns/allergies*

# CONFIRMATION

**CONFIRMATION CLASS IN FEBRUARY** will be held on **Monday, February 4<sup>th</sup> from 6:30-8:00 pm.** During Sunday School in February, the Class will meet with Scott Hanson to prepare a drama based on the story of the Woman at the Well to present in worship on Sunday, February 24<sup>th</sup>.

Remember to reserve June 16-20 for the ELCA Metro St. Louis Coalition ConfirCamp at Camp Wartburg!



## Sunday, February 10<sup>th</sup> Movie Day

Join us after the 2<sup>nd</sup> service (about 12:30 pm) to head out to a movie.

We want to try and go see the Veggie Tales Movie: *The Pirates Who Don't Do Anything*, depending on availability.

## First Communion Instruction

Any child, 2<sup>nd</sup> grade and above, is welcome to prepare to receive the Sacrament of Holy Communion! Classes will be held from 1:30-2:30 pm on three Sunday afternoons, beginning Sunday, February 24<sup>th</sup>. Please talk with Pastor Kendra for more information.

# Health Cabinet

## *Valentine's Spaghetti Dinner: Make Your Plans Now!*

When: Saturday, February 9, 2008 5-8 p.m.

Where: Gethsemane Lutheran Church Fellowship Hall

Cost: \$8.00 Adults, \$5.00 Children 3-12, Children under 3 free



Our annual Breast Cancer fundraiser is here NOW! Not only is this a fun way to give to the Komen Foundation, it is a great evening. We will again have great food, music, and company. Put this date on your calendars.

### Volunteers Are Needed:

Spaghetti Cook and Kitchen Assistants

Singers and Musicians

Dessert Makers: Your Favorite Recipe

Decoration Committee

Clean-up Committee

Sponsors: Make a donation in honor/memory of your favorite Breast Cancer Survivor

Contact Mardi Manary (799-4888) to volunteer!

Enclosed with this Messenger is a pink sponsorship form which you may send to the church.

## **BLOOD DRIVE**

Worried You Might Miss a Blood Drive?

Mark you calendars now for 2008 Blood Drive Dates!

Sunday, March 9, 2008 Church Basement

Sunday, July 27, 2008 Mobile Unit

Sunday, November 9, 2008 Mobile Unit

## **Pedometers help people lose weight: U.S. study**

Walking can help people lose weight, especially if they use a pedometer to make sure they are going far enough, U.S. researchers have reported. People who added 20 to 40 minutes of walking a day lost a small but steady amount of weight, the team at the University of Michigan found.

"The increase in physical activity can be expected to result in health benefits that are independent of weight loss," said Dr. Caroline Richardson, who led the study. "Increasing physical activity reduces the risk of cardiovascular problems, lowers blood pressure and helps dieters maintain lean muscle tissue when they are dieting."

Writing in the Annals of Family Medicine, Richardson and colleagues said they reviewed 9 studies involving 307 men and women who took part in studies of pedometer use that ranged from four weeks to a year.

The volunteers in all the studies but one lost some weight -- about 0.1 pound (0.05 kg) a week on average, Richardson's team found. She found that the weight loss was "remarkably consistent" across all of the studies. Over a year this added up to 5 pounds (2.25 kg). Changing eating habits could help even more, Richardson said. People were able to add between 2,000 steps/day to more than 4,000 steps/day. For the average person, 2,000 steps equals about a mile.

**Please see Mardi Manary, Parish Nurse if you need a pedometer!**

Did you know...that a "Women in Recovery" Group meets at Gethsemane every Saturday morning at 10:30 am? This is an all-female group of Al-Anon Adult Children. Meetings are closed except for anyone who personally has been affected by close contact with a problem drinker.

\*\*\*\*\*

## **River's Edge Via de Cristo (Way of Christ)**

**Men's Weekend**

May 1-4, 2008

LaSalle Retreat Center, Eureka, MO



### **LOOK WHO'S TALKING**

2008 Interfaith Lecture Series

Neighbors Celebrating 25 Years of Inquiry

4:00pm-5:30pm at Temple Israel, Ladue and Spoeede Roads

\$35 for the Entire Series or \$10 per session

No cost for students with a valid ID.

Session I: Sunday, February 10

"Dialogue Today: Are You Talking to Your Neighbors?"

Rev. Phillip Cunningham, Boston College

Rabbi Mark Shook, Temple Israel

Session II: Sunday, February 17

"Believers and Non-Believers: How Do We Approach the Diversity of the Neighborhood?"

David Oughton, Christian Brothers College High School

Karen Aoresty, Anti-Defamation League of B'nai B'rith

Session III: Sunday, February 24

"Welcome Wagon: How Do We Create Space for Our Neighbors?"

Rabbi Susan Talve, Central Reform Congregation

Sr. Carla Mae Streeter, Aquinas Institute of Theology

Session IV: Sunday, March 2

"Religion in America: Where Do We Go From Here?"

Rev. Martin Rafanan, National Council for Community and Justice of Metropolitan St. Louis

Rabbi Joshua Taub, Temple Emanuel

Registration form is on the bulletin board in the hallway. Sponsored by Aquinas Institute of Theology, Eden Seminary, and the Jewish Community Relations Council.

\*\*\*\*\*

**Who should attend a weekend?** Christians who believe their spiritual lives need strengthening; who have many unanswered questions about prayer, study and sharing their faith; who understand being a Christian involves responsibility and would like to have both the spiritual foundation and moral reserve to carry this out in their lives; who are willing to dedicate their lives to God in an on-going manner, are the best candidates to attend a Via de Cristo.

**What happens at a Weekend?** While there, you spend three busy, but very enjoyable days. You live and study together with much singing, prayer, worship and discussion. Discussions center around the talks given by laity and clergy. The talks center around the grace of God, its reality in your life, and how you can live the life of grace, imparting grace to others. You have the opportunity to participate in the daily celebration of Holy Communion and you begin to understand the real presence of Christ in His Body of believers.

**Summary:** We ask you to keep an open mind and heart in making your decision. Many of those who attend also wondered whether they should go. Now that they have, they want to share this wonderful gift from God. Please understand that their experience was unique, and all discussions in the world will not become a substitute for your Weekend. You need to experience it yourself to obtain its full and life enriching value.

Applications and brochures are available from Pastor Kendra. You can also talk with Joan Williams or Ami Boehlje who attended the Via de Cristo Women's Weekend.

# ... AND IN OUR WORLD

## Interest Meeting for South Cluster Immersion Trip with International Partners in Mission Sunday, February 10: 10:00am in the Library

The South Cluster of ELCA congregations is hoping to sponsor an Immersion Trip to El Salvador from September 20-27. Come to meet with Pastor Kendra if you would like more information about the possibility of participating! Pastor Kendra went to El Salvador in 1984, and we hope to have someone with us who has done this trip with IPM.

\*\*\*\*\*

## Christmas With Katrina II: A Mission Experience

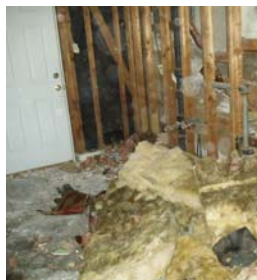
From January 2-6, 2008, Christy Scheidt, Lory Bowman, Linda Ford, Christine Ford, Christopher Moe, Pastor Kendra, Jeff Lindgren, Eric Lindgren from Gethsemane and 6 friends from St. Thomas/Holy Spirit traveled to Camp Biloxi to work with Lutheran Disaster Response in Hurricane Relief Work. After the trip, Lory Bowman wrote these reflections:

➤ The other day while riding home, I read the following passage: “The tree with deep roots weathers the hurricane. Establish your roots deep in God’s Word to weather the storms of life.” Those words hold very special meaning for me as the ride I was on was the return trip from Biloxi, where I had the honor, along with my seven other van mates, to lend a hand for the hurricane Katrina clean-up efforts.

➤ Hurricane Katrina - wasn’t that two years ago? Yes, and what you need to know is the incredible strength and dedication that is going into a now too-long effort. Much more help is needed.

➤ At Camp Biloxi, operated by Lutheran Disaster Response, we started each day with a hot breakfast, camaraderie of making our sack lunches and then in the evening we would return for a shower, another meal and much needed rest. As we came through the gate, exhausted, dirty and hungry it gave us perspective of a fraction of what the residents have suffered. How simple and how meaningful. What a blessing to be with others who are so giving of their time and talent. What a wonderful opportunity to get to know others and be reminded of the strong roots we have at Gethsemane.

➤ The people of Biloxi are doing their best to weather the storm. Please remember them in your prayers and if you are able, take that inspiring step and lend them a hand.



There are more pictures from Christmas with Katrina II on the door near the parking lot stairway.

## FROM MALAWI

### Two Days in Malawi:

The day had an ominous feel as got up at 5am. The agenda for the day was bureaucratic, I planned to visit several offices and try to get some forms submitted and approvals granted. In Malawi the bureaucracy is painful. The entire approval process for conducting a project has 10 steps, and at each juncture, the gatekeeper believes he has right to make one wait for days, or to extract a favor.

It had rained again all night. And it really rained hard. People are saying here there has not been so much rain in 60 years. Tobacco is rotting and the corn cobs will be the next victims if Malawi doesn't get a break. When I first hear such comments I ignore them, the present is always more pressing and impressive than the past. But this time I think they are right.

As I entered the bathroom the floor was wet, was the toilet leaking again? What a pain I thought. When I came out of the bathroom I realized that actually the bedroom had a large pool of water on the floor, and the water was flowing, flowing from the corner of the bedroom diagonally across the entire house, and out of the door. The water then cascades out of the door and down a hill. The site provoked a childhood memory (a legend, not really a memory), Frank Lloyd Wright's house near Pittsburgh, Falling Water. I lived in Pittsburgh from age 4-12 years. I have never actually been to Falling Water, when I was a kid one had to be 12 years old to visit this famous house, and so when my family took guests to see the architectural marvel, I did not go along. Now at 51 years old I get to have a Falling Water Blantyre of my very own.

The feeding team has been very, very busy for 2 weeks.

Everyday is 14 hours, 200-500 children screened, and identification of 60 malnourished children. The team works like clockwork, they have done it so many times. The day starts with morning staff pick-up, a process where Danielle picks them up at home between 5:30-6:30 am. This is followed by a harrowing trip in a pick-up to a remote site. The journey is usually punctuated by a 'low' water bridge in waist deep rushing streams. Crowds of mothers await as the vehicle pulls up. The team pops out, sets up the scale and measure mat and gets to work. Children are returning for follow-up fully recovered. Mothers with edematous children wait with anticipation. Vulnerable children get supplements to help them gain weight, and not simply fall into that pit of malnutrition. Sometime, a few hours later, the crowd thins. Some mothers tell us 10 people drowned yesterday in the rushing stream. Ramsey is distributing Chiponde, our word for ready-to-use therapeutic food. The trip home is laborious by the bedraggled crew. It involved transporting some ill people to the hospital. Home at dark. Next day, get it up and do again.

Danielle (American student) and Johanna (Australian doctor) are the iron warriors of the field. They manage the teams, they are the first out the door in the morning and the last in at 8 pm. They do it all. They see that the supplies are in place, food adequate, cars working, team picked up, kids enrolled correctly and data organized. I am in awe of their tireless efficiency. And they are always buoyant. No grumping, no whining. They *will* get it done. Malawi and I are blessed to have them working for us for the time being.

This seems like real life here. Nothing extraordinary. Life depends on the whims of the weather and the God who controls

this. And of course international business fortunes.

Yesterday gasoline rationing began. The price is about \$7/ gallon and one can only buy 3 gallons at time. Our work involves driving every day. We burn 15-30 gallons/ day depending on whether we take one or 2 cars to the site. So this means many trips to many gas stations. Another crisis to maneuver around, perhaps we need to buy some empty drums and keep them full of gasoline at home for a 'rainy day' (oh I guess it already is a rainy day). Wednesday we dealt with a kerosene crisis by taking empty oil drums to the Mozambique border, leaving them for 12 hours and returning to find them full. We use kerosene to roast peanuts; no kerosene and the feeding operation stops. We dodged another bullet (doesn't seem like we always do). The high price of oil extracts a higher toll in human suffering in Malawi.

I look on the web to see if rainfall has actually been higher than average, yes it is double the yearly average. About 55 cm in the last month. Floods are predicted. Ok, maybe there is a problem.

As I venture from my house at 5:30 am the entire landscape is flowing water. No water is falling from the sky, but the ground everywhere is a flowing sheet.

The bureaucratic stuff doesn't go so well. The College office is not open to accept my application. The tax officer at the revenue authority is gruff. All NGOs must be treated alike he says, you must pay taxes. Taxes in this case is \$60,000 duty on imported milk, something we can absolutely not afford. 'What do you get from this NGO?' he demands to know from me, I tell him without missing a beat 'simply the pleasure of knowing the world is better off today because of my

work'. 'And what does he (Liyaka, the factory manager) get?' I tell him he gets a salary, a workman is worthy of his wages. The tax office can't grant us duty free status on our milk yet. Come back Tuesday. Liyaka says we should invite him to a feeding center. I suggest we pray for this exemption. Neither of us considers bribing the tax officer.

MSF calls, they need 10 tons of RUTF as soon as possible. Looks like we will working double shifts all weekend at the factory.

The Malawian PhD student working on HIV+ adult feeding has been ill and out of commission all week. I really need to catch up with him, his project is finishing. I will try to make contact this evening.

The donors, supporters, bureaucrats and spectators of Project Peanut Butter and the St. Louis Nutrition all want reports, updates, leverage and accountability. There are deadlines and opportunities. New projects and visitors. The donors, supporters, bureaucrats and spectators keep us going here. Without their help we could do nothing. The donors, supporters,

bureaucrats and spectators make my dreams come true, and I make their dreams come true as well. I try to answer their requests in between real life Malawi. When it seems too burdensome, I ask myself; what about results, will not results measured in lives saved and health maintained suffice? Results in tons of RUTF produced. No results are not enough, not in the 'other real world'.

Tandie, the houseworker, has done a marvelous job with Falling Water Blantyre by 1 pm. Floor and everything else is damp, but no pools remain on the floor. A towel and a useless mop are powerful tools in her hands. A cup of tea and a peanut butter sandwich for me and its time to move on.

30 minutes later I look back in the bedroom, another pool is forming. Tandie's effort is valiant, but not a true fix.

Tonight the team gets to go out for pizza (a break, an escape), the village will never seem far away however. For the village women it was a day similar to any other, except there was some hope left in a bottle of peanut butter from a pick-up and a nutrition team.

Later:

It is Sunday mid-day. I am quite tired of all the hassles. The rain continues. I spent part of yesterday with Steven Carr, an old time agriculturalist. He says that there has been 44 straight days of rain now and corn will not put down roots in water saturated soil. So the corn plants may be a bit tall, but have weak roots and could fall over soon. We looked at a few plants and indeed they have about 3 inch roots and are 30 inches tall. He is very concerned we are really going to have a disaster on our hands here.

In the room I sleep in there is 1/2 inch of water everywhere, and it just runs continuously out across the living room and out the door. The room is always humid like a jungle. Everything smells moldy. I find it hard to stay at home. I realize I need to wait until the rainy season is over, but that is 2 more months. The other house has no power. The best pick-up we have today doesn't work. I find myself giving way to frustration. Please keep up in your prayers.

## Lutheran Planned Giving

### Double Meanings

Sometimes one word can mean different things. For example, think of the use we give to the term "trunk." It can mean an elephant's snout, a vehicle luggage compartment, a container for storage or shipping, a swimsuit or even the main body of a tree. All of these uses can be downright confusing unless we know the context of the message. And even then it can be overwhelming to someone who is just getting acquainted with the English language.

Double meanings can also confuse those who are learning about planned giving. For example, we use the term "trust" to mean both a gift vehicle and an attitude of personal confidence. We seek to engender *trust* with our friends to make it easier for them to entrust some of their assets in a charitable *trust* for the benefit of ministry.

Here is another set of terms: appreciation and appreciation. We talk about the appreciation of assets and possible capital gains tax. We also seek to express our appreciation to those who indicate they have remembered ministry in their wills. **And speaking of wills, how about the person who just does not seem to have the will to get his or her will done?** And finally, consider the term "fund." We invite donors to fund an endowment fund with a planned gift.

There are other double-meaning words as well, and we are eager to communicate clearly so there will be no confusion about the wonderful opportunities for you to make a planned gift to ministry. One way we can help is to provide you with basic, informative literature that keeps things simple and clear. We have, in fact, a free brochure for you on planned giving that you will appreciate, especially if you are new to these methods of charitable giving.

In addition to the printed material, our synod and ELCA ministry organizations provide funds so we can have a person skilled in communicating the features of planned giving in a personal and understandable manner. Our ELCA Regional Gift Planner is Joyce "JP" Palmer and she is available to have a confidential visit with you and provide educational seminars in your congregation. To receive your free brochure, or to request a personal meeting with "JP," contact her at:

Joyce "JP" Palmer, Dir./ELCA Regional Gift Planner  
3210 Michigan Ave., Suite 407  
Kansas City MO 64109-2055  
Phone: 816-861-6584 or Cell: 816-204-5181  
E-mail: [jcpalmer49@aol.com](mailto:jcpalmer49@aol.com)

***ELCA Lutheran Planned Giving** is a service to ELCA congregations and individuals to help them plan for themselves, loved ones and the work of the Lord, by providing education and consultation in the area of stewardship of accumulated assets. All services are available without cost or obligation.*

# FEBRUARY 2008

Sunday	Monday	Tuesday	Wednesday	Thursday	Friday	Saturday
					<b>1</b>	<b>2</b>
<b>3</b> <u>"Souper Bowl" Sunday</u> 8:30 AM & 11:00 AM Worship 9:50am Sunday School 10:00am Training for All Greeters and Ushers in the Sanctuary Noon – Sunday School Staff Mtg. 6:30 Tai Chi (continuing) 7:30 Tai Chi (beginner)	<b>4</b> 4:00pm Senior Bells 5:30pm Youth Bells 6:30pm Confirmation 6:30pm Adult Bells 7:30pm Choir Rehearsal	<b>5</b> 7:00pm Worship Comm.	<b>6</b> <b>ASH WEDNESDAY</b> 9:00am White Breakfast 10am Worship Service 7:00pm Worship Service  NO BIBLE STUDY	<b>7</b> 7:00pm Health Cabinet	<b>8</b> Pastor's Day Off	<b>9</b> 5:00-8:00pm Breast Cancer Benefit Spaghetti Dinner
<b>10</b> 8:30 AM & 11:00 AM Worship 9:50am Sunday School 10:00am <u>In the Chapel</u> : "Extreme Makeover-Family Edition" 10:00am <u>In the Library</u> : IPM Immersion Trip Interest Meeting Noon – GYG to the Movies 6:30 Tai Chi (continuing) 7:30 Tai Chi (beginner)	<b>11</b> 4:00pm Senior Bells 5:30pm Youth Bells 6:30pm Adult Bells 7:30pm Choir Rehearsal	<b>12</b> 7:00pm Church Council	<b>13</b> 10:00am Bible Study  6:00pm Soup Supper <i>(hosted by the Choir and Worship Comm.)</i> 7:00pm Evening Prayer	<b>14</b> 8:30am-1:00pm Metro Coalition Pastors' Meeting	<b>15</b> Pastor's Day Off	<b>16</b>
<b>17</b> 8:30 AM & 11:00 AM Worship 9:50am Sunday School 10:00am <u>In the Chapel</u> : "Extreme Makeover-Family Edition" 3:30-7:00pm New Member Orientation 6:30 Tai Chi (continuing) 7:30 Tai Chi (beginner)	<b>18</b> 4:00pm Senior Bells 5:30pm Youth Bells 6:30pm Adult Bells 7:30pm Choir Rehearsal	<b>19</b>	<b>20</b> 10:00am Bible Study  6:00pm Soup Supper <i>(hosted by the Church Council)</i> 7:00pm Evening Prayer	<b>21</b> 10:00am St. Louis Hills Ecumenical Midweek Lenten Worship Service and Reception	<b>22</b> Pastor's Day Off	<b>23</b>
<b>24</b> 8:30 AM & 11:00 AM Worship 9:50am Sunday School 10:00am <u>In the Chapel</u> : "Extreme Makeover-Family Edition"  1:30pm First Communion Class	<b>25</b> 11:00am Rachel Circle <i>Marie Mueller, hostess</i> 4:00pm Senior Bells 5:30pm Youth Bells 6:30pm Adult Bells 7:30pm Choir Rehearsal	<b>26</b>	<b>27</b> 10:00am Bible Study  6:00pm Soup Supper <i>(hosted by the GYG &amp; Confirmation Class)</i> 7:00pm Evening Prayer	<b>28</b> 7:00-8:30pm Ministry of Mothers Sharing (MOMS) Interest Meeting	<b>29</b> Pastor's Day Off	

Gethsemane Lutheran Church  
3600 Hampton Ave., St. Louis, MO 63109  
Phone: 314-352-8050; Fax: 314-352-8051  
Email Address: [Gethsemane@swbell.net](mailto:Gethsemane@swbell.net)  
Webpage: [www.gethsemanestl.org](http://www.gethsemanestl.org)  
Church Office Hours: 8:30am-2:00pm

**Pastor** Kendra Nolde  
314-524-6817      [prkendra-glc@swbell.net](mailto:prkendra-glc@swbell.net)  
**Parish Nurse** Mardi Manary  
314-646-7191      [MManary@sbcglobal.net](mailto:MManary@sbcglobal.net)  
**Organist** Ella Rothgangel  
314-353-4499      [erothgangel@earthlink.net](mailto:erothgangel@earthlink.net)  
**Bell Choir Director** Dawn Schuessler  
636-256-8140      [dschuessler@wustl.edu](mailto:dschuessler@wustl.edu)  
**Choir Director** Ann Luciani  
314-963-0934      [ptlall4@earthlink.net](mailto:ptlall4@earthlink.net)  
**Council President** Carolyn Schainker  
314-352-4183      [cschainker@sbcglobal.net](mailto:cschainker@sbcglobal.net)

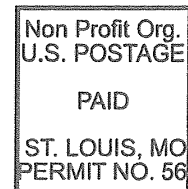
## MESSENGER NEWS

You can send your news and notes for the Messenger to [glc-messenger@swbell.net](mailto:glc-messenger@swbell.net). There is also a Messenger drawer by the church office. For best results, news should be in by the 20<sup>th</sup> of each month, but we'll do our best to get your news in whenever you submit it.

## eMESSENGER

Please consider helping us save a tree and save on the cost of paper and postage. This happens if you choose to receive your Messenger only by e-mail. Just send us a message at [glc-messenger@swbell.net](mailto:glc-messenger@swbell.net).

Gethsemane Lutheran Church  
3600 Hampton Avenue  
St. Louis, MO 63109



**“Return Service Requested”**