



GETHSEMANE LUTHERAN CHURCH



# MESSENGER

A FAMILY IN CHRIST CARING FOR ALL PEOPLE

January 2024

Volume #131 Issue #1



## Messenger Contents

Pastor's Page .....	2
Worship in January .....	3
Community Life .....	4
Around the Church .....	5
Connections Corner .....	6
GLC Purpose Statement .....	7
January Calendar .....	8
January Worship Leaders ....	9
Announcements .....	10
Anniversaries .....	10
Dates to Remember .....	11
Get Connected .....	11
Month in Pictures .....	12

# Pastor's Page

“...with you I am well pleased.”  
--Voice from Heaven, to the newly-baptized Jesus (Mark 1:11)

There is joy in doing the thing you are certain you were made to do. Have you felt this before? Have you ever done a task or completed a project and felt like, *This is what I was made for. This is what I'm meant to be doing.*

How does it feel to recognize your unique purpose, and then to live into that purpose with renewed affirmation and motivation?

For more than a year, members of the congregation—especially the church council leaders—have contemplated how to give words to the purpose of the congregation of Gethsemane Lutheran Church. It's important to note that all congregations of the ELCA have the same purpose, and this is written into chapter four of every congregation's constitution:

“The Church is a people created by God in Christ, empowered by the Holy Spirit, called and sent to bear witness to God's creative, redeeming, and sanctifying activity in the world.”

Say it out loud: it really rolls off the tongue, doesn't it? So yes, while this is the generalized purpose of every congregation, how does Gethsemane Lutheran Church explain its *unique* call to serve God? No congregation can do *every* single thing, but which activities are most important to us? Our purpose statement should be specific to our priorities, but general enough to allow varied expressions of these priorities. (Also: this won't change the ELCA's purpose statement for all congregations; that part stays. A unique purpose statement would be an additional piece of information.)

Paying attention to the congregation's top-identified values—music, serving, diversity, justice, and intergenerational—here's what the church council has recommended the congregation adopt as a purpose statement:

**“Worship God, welcome all to nurture  
a community of harmony, healing, and justice.”**

The first thing we do is worship God, with weekly liturgies and participation in music (whether you sing in a choir or play an instrument or not!). Also we like the language of welcome, since this references our welcome statement, which is printed on our Sunday bulletins and reminds us who we're connected with. No one wants to change the welcome statement! It's much too dear to the heart of this congregation (and it serves as a mission statement, which is a more specific and longer-form way of naming specific actions that arise from purpose).

The language of community was compelling because we recognize the congregation's desire to work in the real world, here and now, with the people among whom—and the creation where—God has placed us. We also seek harmony (a music reference), and healing and justice, which is not an empty peace-at-all-costs, but the deep and abiding healing that we know God can bring.  
(continued on next page)

Does having a purpose statement change anything we're doing? Probably not. We'll keep loving and serving God, same as we always have. But in those moments when we wonder if we're on the right track, or when we feel spread-too-thin with activities, we can look to the purpose statement and consider whether our actions are aligned with our purpose. This should point us toward God, and how God calls us to bring God's reign into view in the real world.

You know, like Jesus did. Jesus started his ministry by being baptized, delighting God by being who he is. May we be delights to God by our baptisms, our belonging to God, our actions, our hearts for welcoming others into this love.

May God be well pleased.

*Pastor Cheryl Walenta Gorvie*

# Worship in January

## **Sunday, January 7, 2024**

### **Baptism of Our Lord**

8:30am In-Person and Online Worship  
 9:45am Sunday School & Fellowship  
 10:00am Adult Forum: Court Watching  
 11:00am In-Person Worship  
 12:30pm VBS and Sunday School Meeting

## **Sunday, January 21, 2024**

### **3rd Sunday after Epiphany**

8:30am In-Person and Online Worship  
 9:45am Sunday School & Fellowship  
 10:00am Committee Meetings  
 11:00am In-Person Worship

## **Sunday, January 14, 2024**

### **2nd Sunday after Epiphany**

8:30am In-Person and Online Worship  
 9:45am Sunday School & Fellowship  
 10:00am Adult Forum: Online Giving  
 11:00am In-Person Worship

## **Sunday, January 28, 2024**

### **4th Sunday after Epiphany**

9:30am In-Person and Online Worship  
*\*Annual Meeting/Sunday School*

*\*The Annual Meeting will take place immediately following the 9:30am service **in the sanctuary.** There will be Sunday School but no Sunday School music, coffee, or donuts. Please plan to attend and meet our new council members!*

## **December Attendance**

### **December 3rd**

91 In-Person 50 Online

### **December 10th**

112 In-Person 38 Online

### **December 17th**

132 In-Person 31 Online

### **December 24th**

**4th Sunday in Advent**  
 60 In-Person 31 Online

### **December 24th**

**Christmas Eve**  
 110 In-Person 36 Online

### **December 31st**

51 In-Person 80 Online

# Community Life

## donate Request of the Month

**January** - Laundry Soap & Dish Soap

**February** - Canned Soup and Chili

**March/April** - Toilet Paper & Pads

**May** - Deodorant & Adult Diapers

**June** - Shampoo, Conditioner, Bar Soap

**July** - Back to School Supplies

**August** - Shaving Cream, Razors, Body Lotion,  
Lip Balm

**September** - Diapers and Baby Care Items

**October** - Toothbrushes, Toothpaste, & Socks!

**November** - Adopt A Family, Gift Cards, Blankets

**December** - Coats, Mittens, and Gloves



**LuMin** is hosting  
“Jesus and  
Dinner” nights  
every Sunday.  
Gethsemane is  
helping on:



**Feb 11<sup>th</sup> and April 14<sup>th</sup>.**

See the website, weekly e-news, or  
the paper sign-up sheet in the  
fellowship hall to participate. They  
will need an entree, side dish,  
dessert, and someone to deliver. You  
are also welcome to join the students  
for their meal!

## Help Us Fill Our Tree



Did you ever wonder where  
Gethsemane’s Mitten Tree came  
from? We did some research and this  
is what we found. About 25 years ago,  
Vi Aronsson’s husband Gus (a well-  
known carpenter in Gethsemane) was  
asked to make something to collect  
mittens and gloves collected at the  
church. Gus designed a Christmas

tree form and he and Vi drove their small car to the  
local hardware store to pick up a sheet of plywood.  
The sheet did not fit in their car, so they drove home  
with it balanced on their roof. After cutting out the  
tree shape and painting it, they then had to deliver the  
tree to Gethsemane. As you can imagine, the new cut  
out was even harder for the two to hold on the top of  
their car. Vi would laugh every time she shared the  
story of their adventure and how much they laughed.

This same mitten is ready for your donated  
mittens, hats, and gloves through the end of January.  
All items will be donated to our friends at Isaiah 58  
and St. Anthony’s.



## Red Cross Blood Drive

**February 12th**

1:00pm - 5:00pm

We welcome all  
“types” of donors. A link to book  
your preferred time slot can be  
found on Gethsemane’s website.



The Social Action Team is  
currently working with Schnucks to  
host a food drive to help fill  
Gethsemane’s Little Free Pantry.  
Watch for more details.

We would like to thank  
everyone who has helped make this  
project such a success. We could not  
keep the shelves full without you.

# Around the Church



## January GLCW Luncheon

*All women are welcome to join us at our next luncheon:*

**Date:** Monday, January 22  
**Time:** 11:30 AM  
**Place:** Bartolino's Osteria  
 in the Drury Inn on Hampton

**Hostesses:** Lois Wind

**RSVP:** Please call :  
 by Friday, January 19th

## New Member Orientation:

Gethsemane's next New Member Orientation is Sunday, January 21<sup>st</sup> from 4-7pm. If you are interested in learning more about becoming a member of Gethsemane (and haven't already contacted Pastor Cheryl or Gretchen) please RSVP by January 14th. Also, if you are a current Gethsemane member and are interested in helping with dinner, we welcome your presence! Contact Gretchen for more information and to sign up.



## Gethsemane's Annual Chili Cook-Off and Cookie Contest!!

**Mark Your Calendars for Sunday, February 4th**

Calling all chefs and bakers! It is time to grab those aprons and dust off your recipe boxes. Start testing those secret ingredients and watch for your chance to sign up in this month.



## Adult Forum Topics

All adults are welcome to join us in the chapel between services at 10:00am for the following discussions:

Jan. 7th - Court Watching  
 with Chris Schmidt  
 Jan 14h - Electronic Giving  
 Jan 21st - Social Action Team  
 Jan 28th - Annual Meeting

## Communion Wine and Altar Flower Sign-Up Sheets Now Available

The 2024 Communion Wine and Altar Flower sign-up sheets are now posted. There are still a lot of available dates.

Wine sponsorship is now \$10. This price increase is reflective of the increased number of people participating in weekly communion and helps cover the cost of the juice we use.

Did you know that when you sponsor the weekly flowers, you are encouraged to take the flowers home with you after the second service?



## The Property Committee is Looking for Church Mice

Are you looking for an opportunity to serve as a "Church Mouse" by helping with some small projects around the church? The property committee has created a list of easy, one-day projects and they need your help. Watch for a complete list and more information coming soon.



# Connections Corner



✉: [glcstlsocialmedia@gmail.com](mailto:glcstlsocialmedia@gmail.com)

☎: 314-518-6978 (ok to text)

\*if you send me a friend request on Facebook I will accept you!

**Office hours: Mon –Thurs, 10am—2:30pm**

## Ways to stay connected:

Utilizing these resources can help you feel closer to Gethsemane!



**Give online**  
(Vanco Mobile App)

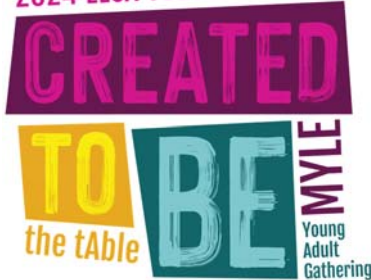


**Access the Church Directory**  
**Online** (Instant Church Directory)



**Watch Worship Services**  
**Online** (YouTube)

2024 ELCA Youth Gathering



## Youth Gathering

Thanks to everyone who has donated to and continues to support the youth group fundraisers! We are very close to meeting our goal which will cover expenses for this year. Anything over our goal will go back into the fund so the next group has a little bit of seed money to get them started. The next gathering will be in 2027! (If your child will be in 8-12th grade that year they will be eligible to attend)

The next fundraiser will be snacks for your super bowl party! Stay tuned for when and ways to order. You can always donate to the Gethsemane Youth Fund directly. There is a link on Gethsemane's website under the "donate now" tab. Scroll until you find the ELCA Youth Gathering tile.

There will be a Youth Gathering meeting for those who are attending the Gathering to go over the getting ready materials on Sunday January 14th after the 11am worship service.

FYI - There will be a meeting on Jan 7th from 12:30-1:30pm in the Fellowship Hall to discuss the possibility and likelihood of VBS this summer, Sunday School, and a Christian children's book lending library.

**Website:** [www.gethsemanestl.org](http://www.gethsemanestl.org)

**YouTube:** [gethsemanestl](https://www.youtube.com/gethsemanestl)

**Instagram:** [gethsemane\\_elca\\_stl](https://www.instagram.com/gethsemane_elca_stl)

**Pinterest:** [Gethsemane Lutheran Church](https://www.pinterest.com/GethsemaneLutheranChurch)

**Facebook:** [Gethsemane Lutheran Church - ELCA, St. Louis, MO](https://www.facebook.com/GethsemaneLutheranChurch-ELCA-St-Louis-MO)

## Find Gethsemane on Social Media:



# GLC Purpose Statement

Over the past year, your church council has been working on a “Purpose Statement” project. The dictionary defines purpose as *the reason for which something is done or created or for which something exists*. This differs from a Mission Statement in that a Purpose Statement is WHY you exist, and a Mission Statement is HOW you fulfill your Purpose. Mission Statements are lengthy and detailed while Purpose Statements are short and make a bold proclamation. Over the course of the year, council has come to you, the congregation, to gather input which would help shape the formation of a Purpose Statement. You placed sticker dots on a “Values” exercise. Questions were asked regarding WHO and HOW we serve. While it’s true that council cannot dictate to an individual member of the congregation the answers to these questions by the formation of a general Purpose Statement, these are personal decisions and everyone will have their own reasons. This is a statement of the collective body of GLC. There were a few common themes that came from you, the congregation, as to WHO and HOW and certain values outweighed others. Also taken into consideration were existing ministries and areas of focus for GLC. Serving God and community were predominate themes. We serve through our social justice initiatives and a high value was placed on music, collecting the most sticker dots.

So why go through this exercise and develop a Purpose Statement? It becomes a guiding light for us as an organization. It provides council with a measuring stick to evaluate ministries important to GLC. And it informs others what Gethsemane stands for. At this year’s annual meeting, the following statement will be presented for acceptance by the congregation as the GLC Purpose Statement.


**Worship God, welcome all to nurture a community of harmony, healing, and justice.**

Now is your opportunity to provide any feedback for council to consider before the annual meeting. You can send comments to the church office email or leave on church office voice mail.

## **Thank You Church Council!**

On Sunday, January 28th, we will come together for our Annual Congregational meeting. We plan to meet in the sanctuary, immediately following worship. During the meeting, we will vote on the new church council members.

At this time, we would like to thank our outgoing council members: **Matthew Christian** and **Anja Walentik**, who have fulfilled their 3-year terms. We would also like to thank our current and returning council members: **Barb Johnson** (current President), **Betsy Bartholomew**, **Rich Brendel**, **Gary Borkowski**, **Eve Cooney**, **Richard Lima**, **Carolyn Schainker**, and **Rick Schuessler**.

Sunday	Monday	Tuesday	Wednesday	Thursday	Friday	Saturday
	<b>1</b> Office Closed	<b>2</b>	<b>3</b> 10:00am Staff Mtg (Office will be closed between 10am and 12pm)	<b>4</b>	<b>5</b>	<b>6</b> Epiphany 
 <b>7</b> 8:30am Worship 9:45am Sunday School & Fellowship 10:00am Adult Forum – Court Watcher 11:00am Worship 12:30pm VBS Planning Meeting 5:00pm Vocal Choir	<b>8</b> 6:00pm Bell Choir	<b>9</b> 10:00am Bible Study 6:30pm Council Mtg	<b>10</b> 10:00am Staff Mtg (Office will be closed between 10am and 12pm)	<b>11</b>	<b>12</b> National Hot Tea Day 	<b>13</b> 8:00pm Project Sanctuary
<b>14</b> 8:30am Worship 9:45am Sunday School & Fellowship 10:00am Adult Forum – Electronic Giving 11:00am Worship 12:00pm Youth Gathering Meeting 5:00pm Vocal Choir	<b>15</b> Martin Luther King Day Office Closed 6:00pm Bell Choir	<b>16</b> 10:00am Bible Study	<b>17</b> 10:00am Staff Mtg (Office will be closed between 10am and 12pm)	<b>18</b>	<b>19</b> *Messenger info. due	<b>20</b> Penguin Awareness Day 
 <b>21</b> 8:30am Worship 9:45am Sunday School & Fellowship 10:00am Committee Meetings 11:00am Worship 4:00pm New Member Orientation 5:00pm Vocal Choir	<b>22</b> 11:30am GLC Women's Luncheon 6:00pm Bell Choir	<b>23</b> 10:00am Bible Study	<b>24</b> 10:00am Staff Mtg (Office will be closed between 10am and 12pm)	<b>25</b>	<b>26</b>	<b>27</b> Chocolate Cake Day 
<b>28</b> 9:30am Worship 10:30am Annual Congregational Meeting and Sunday School 5:00pm Vocal Choir	<b>29</b> 6:00pm Bell Choir	<b>30</b> 10:00am Bible Study	<b>31</b> 10:00am Staff Mtg (Office will be closed between 10am and 12pm)			



	7th		14th		21st		28th	
	Early	Late	Early	Late	Early	Late		
	Cayce M.	Debbie S.	Norm H.	Rob S.	Kathleen M.	Peggy L.	9:30am Keith P.	
Greeter	Ted Y.	Rob S.	Adam R.	Denise B.	Cayce M.	Riley B.	John S.	
Usher	Adam R.	Denise B.	Cayce M.	Riley B.	John S.	Steve H.	Steve H.	
Usher	Rick S.	Gary B.	Amy R.	Carolyn S.	Megan Y.	Gary B.	Phyllis S.	
Assisting Minister	Megan Y.	Ami B.	Richard L.	Debbie S.	Chris S.	Marilyn M.	Mike S.	
Lector	Pastor Cheryl		Lindsay Schuessler		Chris Schmidt		Pastor Cheryl	
Children's Sermon	Stephen Brown							Tepe/McFarlane Family
Wine	Hunsinger Family		Richard Lima		Richardson Family		Tepe/McFarlane Family	
Bread Baker	Joan Williams		N/A		Melissa Tepe		N/A	
Blood Pressure	Schmidt Family		Walentik Family		Wisch Family		N/A	
Fellowship Host	Elliott Family		Walentik Family		Sue Hackmann		N/A	
Donut Driver	No Sponsor		<b>Needed</b>		<b>Needed</b>		<b>Needed</b>	
Altar Flowers	TBD							
Altar Guild	TBD							
Camera	Gretchen Jenson							

# Announcements & Anniversaries

## *Congratulations...*

to the Kohlberg family on the birth of Juliet Layne on November 16<sup>th</sup>.



to the Moe family on the birth of Eric Randall in November.

to Connor Boehlje upon his graduation from the University of Kansas. Watch for more information in Gethsemane's May Messenger: Graduate Edition.

## *Thank You...*

to those of you who took the Christmas Care packages to the Gethsemane members who are homebound.

to Cheryl Bauer, Margaret Lenhart, and Phyllis Saathoff, for getting the Christmas packages together.

to Phyllis Saathoff, Ami Repp, and Sharon Salerno for decorating the church and sanctuary and to Rich Brendel, Mike Elliott, and Keith Paulson for trimming the tree.

## **Third Sunday Committee Meetings**

In an effort to encourage more committee meetings and member involvement, we will now reserve the third Sunday of each month for committee meetings. We will not schedule adult forums, speakers, presentations, or events on the third Sunday. Contact the church office with any questions, to reserve your space, or to announce your meeting plans.



## **January Birthdays**

- 2 Cheryl Walenta Gorvie
- 3 Mark Overton
- 4 Carol Frohlichstein  
Royal Wobbe
- 6 Myles Richardson
- 9 Charles Tullock
- 10 Brent Jenson
- 11 Aria Thomé
- 13 Claudine Hensel
- 15 William Unsicker
- 19 Elizabeth Breed Penny
- 24 Rick Schuessler  
Rob Schurz
- 25 Melissa Tepe  
Maggie Schurz
- 26 Jean Miller
- 28 Alex McElwee
- 29 Dan Flaxbart

## **January Anniversaries**

- 15 Larry & Margret  
Hollingworth 56



# Dates to Remember

## Coming Up:

Sunday, January 14	Youth Gathering Meeting
Monday, January 15	Church Office closed for MLK
Sunday, January 21	New Member Orientation
Monday, January 22	Women's Luncheon
Saturday, January 27	Food Drive at Schnucks
Sunday, January 28	Congregational Annual Meeting
Sunday, February 4	Chili/Cookie Cook-Off

## Don't Forget

Every Wednesday -  
Bulletin Items By Noon

Second Tuesday -  
Church Council Meeting

Third Friday -  
Messenger Articles Due

December 1st -  
Budget Requests Due

Committee Reports are  
due Friday, December 6th.



## SPECIAL EVENT HIGHLIGHTS OF THE MONTH

Sunday, Jan 28, Congregational Annual Meeting immediately following the 9:30am service. (Sunday School will follow the 9:30 service but there will be no coffee or donuts.)

# Get Connected @ Gethsemane

## Gethsemane Lutheran Church

3600 Hampton Ave.,  
St. Louis, MO 63109  
Phone: 314-352-8050  
Fax: 314-352-8051  
Email Address:

**office@gethsemanestl.org**

Church Office Hours: 8:00am-2:00pm

**Pastoral Care:** Rev. Cheryl Walenta  
Gorvie 903-918-3992  
pastor@gethsemanestl.org

**Council President** Barb Johnson  
314-962-3501  
barbjohnson47@hotmail.com

**Website:** www.gethsemanestl.org  
**YouTube:** gethsemanestl  
**Instagram:** gethsemane\_elca\_stl  
**Pinterest:** Gethsemane Lutheran Church  
**Facebook:** Gethsemane Lutheran Church -  
ELCA, St. Louis, MO

## eMESSENGER

Please consider helping us save a tree and save on the cost of paper and postage. This happens if you choose to receive your *Messenger* only by e-mail. Just send a message to:  
**messenger@gethsemanestl.org.**

## WEEKLY E-NEWS

If you are not receiving our weekly e-news and would like to receive it, let us know by sending us an email. Please make sure that you put our address in your address book so that your spam filters let it pass through!

## MESSENGER NEWS

You can send your news and notes for the *Messenger* to **messenger@gethsemanestl.org**. There is also a *Messenger* drawer by the church office. For best results, news should be in by the third Friday of each month.



Gethsemane Lutheran Church  
3600 Hampton Avenue  
Saint Louis, MO 63109

Return Service Requested

# Month in Pictures

